

World Times & Tips User's Guide

Introduction

World Times & Tips is a Java application designed for use on J2ME-enabled phones and handhelds. Safe Times & Tips comprises of 3 different applications:

World Times – a world clock with 550+ cities from 220+ territories, world map, power voltage and international dialing prefixes for each city. Adjustable watch lists with your home city and 4 other around the globe & automatic daylight saving calculator. Plus a simple and easy to use Sun Compass for each city.

Timers – 6 timers to track from short (seconds) to very long (years) periods of elapsed time. Just press the timer(s) and close the application. Next time you open it – it will show the elapsed time down to the second and keep counting on. Press again to stop/freeze the timer(s). Ever wonder how long it will take to build that house you saw they started today?

To Date – enter From & To dates and a number of days to offset the To date and it shows the exact End date and what day of the week it is. Plus, it shows how many days there are between From & End dates. Works both for past and future dates and any positive or negative days offset. Ever wondered how many days, you or your parents have lived? Or what day of the week is next New Year day (or 100 days before it)?

Minimum Requirements

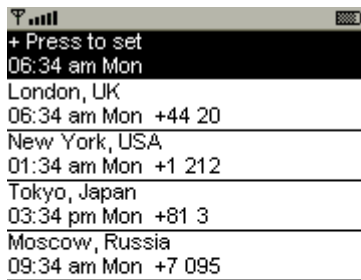
This application runs in all phones and other devices that support J2ME MIDP 1.0 & CLDC 1.0 and higher versions. Please check your phone's Java memory before installing any applications. For instructions on how to check your java memory and on how to install Java applications, please refer to your phone's User Guide. For downloading this application, 30K of memory is required. Program Memory Space of 60K and Data Memory Space of 3K is required for the installation.

PalmOS, Nokia Communicator & Sony-Ericsson P900 users should review the support section at the bottom.

World Times

The Watch List

The first time you start World Times you will be greeted with the following message: "The home(+) city must be set first. The home(+) city sets the timezone base for the rest of times shown." After dispatching this message you will see the main "watch list" screen of the application that will look at the beginning like the image below. If you do not change the home city, the warning message will greet you again the next time you start the application.



To move the current selection up or down use your device's keys for up or down movement. The selected entry is denoted by black background and white text.

Once you have the selection on an entry you wish to change, just press the normal keys on your device to confirm selection. This will cause the "Find City" sequence to be started. (See "Find City" below). If using stylus or pointer devices – just click once over the entry.

However if the selected to change city is the home (+) city and it has been set before the following message will show first: "The home(+) city sets the timezone base for the rest of times shown."

If you cannot find the city your look for in the list, pick one in the same time zone and daylight savings – usually the capital of your state or territory or the nearest big city.

After you pick a city, it will show in the selected entry in the "watch list" along with its current time, day of the week and international dialing code. The dialing code comprises of the country or territory international code prefixed with '+' followed by space and the city code if known. Some cities have more then one area code but only the most common is listed on the screen. The prefix of '*' in front of any time shown denotes this city is currently using daylight savings time (1+ hour their normal GMT offset)

After the home city is picked up, your "watch list" screen should look similar to this:



See “Automatic daylight savings” for explanations on cities with trailing apostrophe (') after their name.

The Home City (+)

Your first task will be to set the home city at the top. The home city is also denoted with the '+' sign in front of it. See “Watch List” above and “Find City” below on how to change any city from the watch list.

The home city sets up the base time. The application knows its hour offset to GMT and its current daylight savings status and it can use this information to calculate the current GMT time and from that the times for all the cities.

If you cannot find the city you look for in the list, pick one in the same time zone and daylight savings – usually the capital of your state or territory or the nearest big city.

Once you select a city to server as your home (+) the times shown for the rest of the cities will change. See below for more information about the home city time.

Set home (+) time

Upon change of the home city, the current time of your device will be automatically used as the time of the home city. In most cases it will be the correct time, since you usually are located in or near your home city or in its time zone and your device system time is set to match the local time.

However, if the current time for your home city is incorrect, you can change it by using the “Set home(+) time” option from the menu controlled by your devices soft keys. (You must have set a home city first; otherwise the warning message will appear.) The time entry, by default pre-filled with the current system time of your device, if changed, will be used as the current time of your home city.

This is also useful in case you move to another city in different time zone, changed your device time but still keeping the original home city. I.e. you moved from New York, your home city, to Rome, Italy, changed your device to local Italian time but still wish to have New York as the home city in the watch list. Use the “Set home(+) time” to adjust the New York time to the correct one, and your watch list will show correct times for 5 different cities around the world.

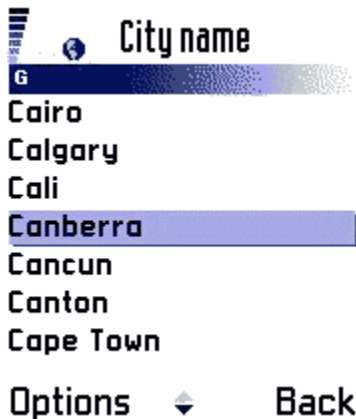
Find City

Whether you are browsing the world map (see “Map/info”), or changing cities on your watch list, you will be presented with list of the city names to choose from.

The first lists allows you to pick the first letter of the city you are looking for:



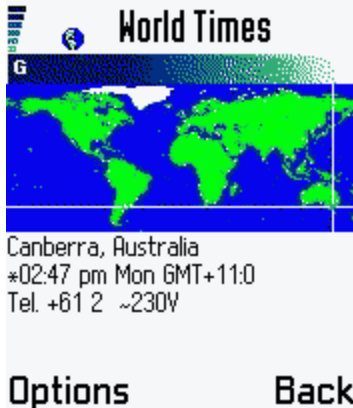
If you select “Back” from the menu, you are returned to the watch list. If you pick an entry, you will see a list of cities with names starting with your selection:



If you select “Back” from the menu, you are returned to the 1st list. If you select a city from the list, it will show in the world map/info (see “Map/Info”) if the search was started with the “Map/Info” command, or it was started from the watch list to change an entry there, the watch list will show with the chosen city replacing the selected entry in the watch list.

Map/Info

The “Map/Info” command launches first the “Find City” sequence (see above) and after you select a city it shows a screen with world map an cross-hair location of the chosen city, its name, country/territory and its current time including day of the week. On large screen devices, the name, time and additional information is printed under the map. There the screen looks like the one below, and the extra info includes the GMT offset (+1 if daylight saving is on – denoted by the ‘*’ in front of the current time), the international dialing code to the city and the power voltage denoted with ‘~’ in front.



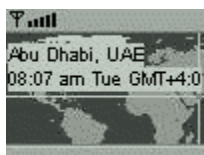
Using the device up/down keys, you can change the city to the previous/next in alphabetical order without the need to do new search. For example if in the above screen you press the down key, the following screen will show:



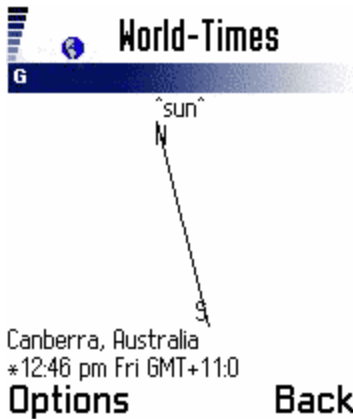
If your device supports stylus (or other pointing inputs), you can move up/down in the list by swiping up/down with the stylus over the map.

If the map is larger then the screen size and the city show appears outside of the boundaries, the map may be panned down and/or right so the cross-hair location of the city still shows.

On small screen devices, where there is no space for text below the map, the text will be shown on the map either below or above the horizontal line of the cross hair:



If you hit either the right key or your soft key for “select” (fire, go, or the middle of the jog dial if any) or tap once with the stylus on it, the screen will change to one showing the Sun Compass.



If you have set the correct time and picked the correct city you are located at or nearby, all you have to do is to point the top of your device (“^SUN^”) towards the sun while holding it horizontally, with the screen facing towards the sky. The line on screen will show the North/South directions (N/S). Of course before sunrise and after sunset you cannot use the compass, but it will still point the correct direction if the top of the device (“^SUN^”) is facing the approaching sunrise or the still glowing sunset. You can still browse up/down via the city list – the compass will change accordingly, but the direction shown will not be useful for you position.

If you hit again either the right key or your soft key for “select” (or tap once with the stylus), the screen will change to one showing a text only info – this is useful either because you are on small screen device and need to see all info, or the info is not showing up in full at the bottom. You can browse up/down among the city lists with up/down key (or up/down swipes with the stylus) on your device. In this case your screen will look like the one below:



Options Back

Hit the left or “select” key again (or tap with the stylus) to go back to the world map mode.

Select “Back” from the menu to go to the 2nd list in the city search. From there you can quickly lookup another city or go back to the watch list.

Automatic daylight savings

To save program space and reduce complexity the application assumes the start or end of daylight changes happens at midnight. In reality most daylight changes occur between midnight and 3 am depending on the country.

The calculation of daylight savings status for the cities in the watch list is done upon startup and when any of them is changed. The daylight saving status of the cities in the map/info browse mode is calculated upon showing the city. This means that if the daylight status of a city is changed meanwhile, the application will not update accordingly the watch lists, as well as the map/info display, if the selected city is not changed. However the daylight change will be reflected if the application is closed or the city on the watch list or in the map/info display is changed.

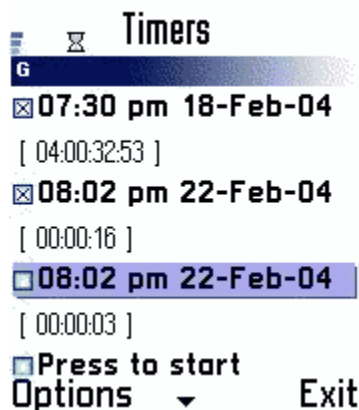
With the above limitation, the application does calculate correct daylight savings status for most cities that have well-defined and permanent rules about it. However there are cities where the daylight change is not well defined. Examples are south Brazil where the president decides upon exact dates each year, as well as Israel and other territories where the change is voted upon by the government or relies on religious calendar.

For such cases the application makes assumption of when the change is going to happen and may be off by 1-2 weeks (or more) for the start and end dates. Any such city is denoted apostrophe (') at the end of its name. If such a city is picked for the watch list, the following warning message will show each time the application is opened: "DST unknown/approximated for a city, if its name ends with '-'symbol. Time(s) shown may be 1 hour off."

Timers

The first time you run this application, you will see 6 check boxes; all labeled "Press to start". These are the 6 timers not yet running.

To start any of the timers just select one (set the checkbox) and it will change to the current time and date and below it a timer will start going on. Press again (clear the check) and the timer will stop – it will still show the original time it was started on and the actual time measured till the stop will show below. Press again – it will start counting a new - not resuming. The measured time is in the format of "days:hours:minutes:seconds" with the days being omitted if less than 1. See the image below:



There is no limit to the counted time and the application will count the time even if closet (i.e. will show correct times when started again).

Note: the application uses your device system time, so if that time is changed the times kept by each timer will change too.

To Date

The application display offers you only 3 entry fields – one for the 'From' date, one for the 'To' date and one for the number of days to offset the 'To' date. The 'From' & 'To' dates are always initialized to the current system date of your device and the days to offset to 0.

To find about out a future or pass date – enter it in the 'To' date field. Note, that the editing of dates happens differently on different devices. If you want to find a date that is some days before or after the 'To' date - enter the days with + or – sing in the 3d field.

For example, to find out what is the date that is 100 days before the next new year (say 2005), enter the date "1/1/2005" in the 'To' field and "-100" in the second field.

After you have the values you need just select the "Calc" command from the soft menu. The resulting end date including the day of the week as well as the number of days form the 'From' date till that end date, will show at the bottom. (You may need to scroll down on small screen devices to see the result). See the images below. Note: the application display looks different on each device. This is the Nokia 3650 screen:



NOTE: On some devices, the dates can't go before Jan 1st 1970 due to device's Java implementation.

Summary

World Time & Tips offers a convenient way to have multi-city world clocks, date calculator and timers on a device that most users will have already - their mobile phone. In addition the software is only a fraction of the price of equivalent software for the Palm and Pocket PC.

Support

For support in using World Time & Tips, please contact j2me_apps@yahoo.com.

For support in downloading World Time & Tips please contact your operator or one of the software distributors. If you have purchased the application and the download failed, again please contact the operator or distributor in the first instance. If you have trouble getting the application you have purchased from the operator or distributor please email j2me_apps@yahoo.com and attach the invoice to the email and we will arrange a link for you to download the software. If you'd like to get more information about this product or any others from same developer, please visit the www.geocities.com/j2me_apps web site.

PalmOS:

Please make sure you have Java VM installed. You must use the WebSphere Micro Environment, available at <http://www.palmone.com/us/support/jvm>.

Nokia Communicator Series:

Make sure you have the latest patches form Nokia and you are running the application as J2ME (MIDP 1.0/CLDC 1.0) not PersonalJava. To get J2ME/MIDP on your Nokia and run the application follow the steps below:

Step 1: Installing Java (usually this component is preinstalled)

Copy Java.SIS, located on the CD that came with your device
at Software/Communicator/Device/Java.SIS, to your Communicator
Select Install/Remove from the Control Panel.
Choose "Install new" and choose the Java.SIS file now located on your Communicator

Step 2: Installing MIDPUI

Login to <http://www.forum.nokia.com>
On the right-hand vertical menu select Java->Tools and SDKs->MIDP. Scroll down the page to the heading "MIDP Software for Nokia 9210 Communicator"
Download MIDP_beta_sw_for_9210.sis
Copy MIDP_beta_sw_for_9210.SIS to your Communicator
Select Install/Remove from the Control panel
Choose "Install new" and choose the MIDP_beta_sw_for_9210.SIS file now located on your Communicator

Step 3: Installing World Times & Tips

Copy: cw.jar and cw.jad to your Communicator (if you did not get the jad file – send a request to j2me_apps@yahoo.com)

Run MIDPUI from the Extras menu

Press the "Menu" button on the Communicator's keyboard

Choose File->Install->File

Select your copied "cw.jad" file to Install

Step 4

Run from "Extras" MIDPUI – then select All Times & Tips.

Sony-Ericsson P900:

The initial version of the Sony Ericsson P900 software (R1* Organizer) exhibited some serious problems, which appear to be fixed in the R2* Organizer release. Upgrade to the latest software: go to <http://www.sonyericsson.com/updateservice/P900/frameset.htm> and follow the instructions.